



### *Headteacher's Message*

This week Father Keith came and took a collective worship on preparing for Christmas. He told us how special Advent is and the children guessed which pictures might be behind their Advent Calendars. He set the children a lovely challenge to think of something they are thankful for when they open their Advent Calendar every morning. It would be lovely if you encourage them to share this with you at home. They were encouraged not to only be thankful for the presents they are hoping to get but for the little things that make their world special e.g. the sunshine, their Mum, a smile from a friend. We appreciate that some children may find this difficult but at Walsh Memorial CE Infant School we always rise to a challenge.

On another note thank you very much for your wonderful efforts in encouraging your children to come into school independently.

*Have a lovely weekend.  
Mrs Suzanne Cawson*

### *School Lunches*

Week commencing **5th December** we will be on **Week 3** of the dinner menu.

### *Emerald Class Cake Sale*

The Emerald Class Cake Sale is on 16th December at 3pm in the playground. Please could Mummies and Daddies donate cakes for the class to sell on this day. All proceeds will go directly to Emerald class and they will use the money to buy equipment for wet play and golden time.



### *Christmas Cards*

On Monday 12th December our Christmas post boxes will open for children to send cards to their friends. There are three post boxes, one for each year group and they will be placed near to the classrooms of each year group. To help our Postman, a member of staff will assist the children in ensuring that they are being posted in the box for the correct year group.

Please help your child to write their friends' names on the envelope

If your child is sending cards to their entire class, please pop the cards in a bag or secure them with an elastic band as this will help our distribution process!



### *Flu Vaccination Forms*

(Years One and Two only)

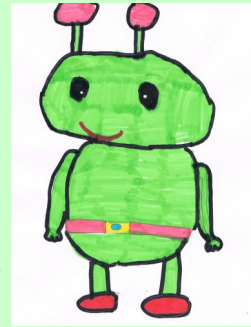
The school nursing team will be coming into school on Tuesday 6th December to administer the flu vaccination to all children who have a signed consent form. If you have not yet returned your form and you would like your child to have the vaccination, please return it to the office before 3pm on Monday 5th December.



## *Christmas Performances*

We are in the process of allocating tickets for the Christmas Performances and we will send tickets home in book bags to those that have ordered them home in the next few days.

If you have not yet returned your form, please do so as soon as possible. There are spare forms in the reception area if you need one. Unfortunately we will not accept requests for tickets over the phone or via email.



## *Christmas Craft Club*



Tickets for Christmas Craft Club have been sent home in book bags today.

If your child is coming to Craft Club, please could they bring a named shoe box or shoe box sized box to school on Wednesday 7th December to put their artwork in safely throughout the afternoon.

Please wait at the reception area at 4.30pm to collect your child.

If you are helping out at the event, please come to reception and sign in at 2.45pm. Thank you!

## *Photography and Recordings in School*

A letter has been sent home regarding the use of photographic and recording equipment in school. Please can you ensure that you have read, signed and returned this form to school *before* the Christmas Performances which start on 12th December.

If you do not wish your child to appear in our recording of the performance, which will be sold to parents, please could you return the slip attached to the same letter before 9th December. Thank you.

## *Letters to Santa*



Our Christmas post box was put out on 28th November and is located in the corridor opposite the staff room if your child would like to send their letters to Santa.

If you need a copy of the letter that we emailed home about this, please let Mrs Thorn in the school office know.



## *St Peter's Christmas Fair!*

*St Peter's Centre*

*Saturday 3rd December*

*11am-2pm*

*Lots of stalls, food and carols.  
Plenty of activities to get you  
into the Christmas spirit!*

*Father Christmas has scheduled a  
visit too!*

## *Phyllis Tuckwell Fundraiser*

Children have been sent home with a sponsorship envelope for our Phyllis Tuckwell Reindeer Romp on 20<sup>th</sup> December. All children will be invited to take part, however, we would ask that in order to cover the costs of receiving the antlers and the reindeer noses, that each child raises £2 or more. Any proceeds will go directly to the Phyllis Tuckwell charity.

If you are able to sponsor your child, please place the money in the envelope and return it to school on or before 20th December. Thank you.



## Alien Words

We hope your child will have mentioned 'alien words' at home when they are sharing what they have learned each day.

**But what is an alien word and why do children need to be able to read them?**

An alien word is a nonsense word made up of between one and two syllables that children have to read, sound out and blend as part of the national phonics screening check. The children are marked on whether they can sound out the word using the correct phonemes and graphemes.

To help the children understand the difference between a real word and an alien word during the test a picture of an alien is displayed beside the word. We practice making and reading alien words in all year groups.

Real words	Alien words
	

Can your child sort these words into real words and alien words?

pat, sat, sit, tis, sat, pan, nis, it, ta,

stim, sip, ip, at, as, in, ap

**PhonicsPlay.co.uk**

[Interactive phonics games](#) [Printable resources](#) [Ideas for teachers](#) [Advice for parents](#) [Assessment ideas](#) [Inspiration](#) [Planning](#) [Fun](#)

There are is a great free game on the above link for children. Have fun with Obb and Bob!

Parental Guidance



*Fundraising for school on Black Friday or Cyber Monday that does not cost you any more.....*

### **ONLINE**

Raise free funds by shopping online with easy fundraising just visit [www.easyfundraising.org.uk/causes/wmipta](http://www.easyfundraising.org.uk/causes/wmipta) and follow the simple steps to sign up. Every time you shop online at over 2,700 retailers including, John Lewis, Smyths Toy Store, Asda, Tesco, Amazon, Argos and Ebay you will earn a donation for us and it won't cost you a penny!

### **IN STORE AT THE CO-OP**

We are lucky to have been selected as one of the Co-ops Local Community Fund charity until March 2017, to help raise money to create an outdoor musical classroom for the benefit of the children and families of the school and the wider community. If you shop in the co-op and have a card why not log onto the Co-op website and select the Parent Teacher Association of Walsh Memorial CofE (cont) Infants school, as your charity so we receive 1% of your spend on co-op branded items.



P  
T  
A  
  
N  
e  
w  
s

Date	Event	Time
	<b>Autumn Term 2</b>	
6th December	Flu Vaccinations for Years One and Two (for those with signed consent forms)	
7th December	Christmas Craft Club	3.00pm-4.30pm
12th December	Dress Rehearsal of the Christmas Performance (please see letter sent home)	9.15am
13th December	School Christmas Performance (adults and pre-schoolers with tickets)	9.15am
14th December	School Christmas Performance (adults only with tickets)	9.15am
15th December	School Christmas Performance (adults only with tickets)	1.30pm
16th December	Emerald Class Cake Sale	3.00pm
19th December	Christmas Church Service (all year groups). Walkers will be needed. <b>Parents to collect their child from church—no DBS required</b>	2.00-3.00pm
20th December	School Disco	5.00pm-6.30pm
20th December	School Christmas Lunch for children	
21st December	End of Autumn Term	School closes at 1.10pm
	<b>Spring Term 1</b>	
3rd January	Start of the Spring Term	8.45am
15th January	Deadline for Junior School applications for all Year 2 children	

# Dates for your Diary